



International Journal of Innovative Research in Science Engineering and Technology (IJIRSET)

(A Monthly, Peer Reviewed, Refereed, Scholarly Indexed, Open Access Journal)



Impact Factor: 8.699

Volume 15, Issue 4, April 2026

AI Based Automatic Diagnosis of Diabetic Retinopathy using Image Processing and ML Technique

Mr. Ganesh P. Joshi, Prof. S. G. Tathe

ME Student, Department of Computer Engineering, Vishwabharti Academy's College of Engineering, Ahilyanagar,
Maharashtra, India

Asst. Professor, Department of Computer Engineering, Vishwabharti Academy's College of Engineering, Ahilyanagar,
Maharashtra, India

ABSTRACT: Diabetic Retinopathy (DR) is a severe complication of diabetes that can lead to vision loss if not detected early. This project focuses on developing an AI-based system for automatic detection and multi-class diagnosis of Diabetic Retinopathy using image processing and machine learning techniques. By leveraging a Python-based web application, the system can process retinal images, extract meaningful features, and classify the severity of DR into multiple stages. The use of advanced Convolutional Neural Networks (CNNs) ensures high accuracy and reliability in identifying the disease at an early stage, making it possible to assist doctors in timely diagnosis. The system uses a Diabetic Retinopathy dataset for training and validation. Images are pre-processed to enhance features such as blood vessels, exudates, and microaneurysms, which are critical indicators of the disease. The CNN model is trained to recognize patterns corresponding to different stages of DR, ensuring efficient and automated diagnosis. This reduces the dependency on manual screening, which is time-consuming and prone to human error, providing a scalable solution for mass screening in healthcare systems. The proposed approach not only offers accurate classification of DR severity but also provides a user-friendly interface for medical professionals to upload images, visualize predictions, and monitor patient progress. By combining image processing and machine learning, this project aims to improve early detection rates, assist ophthalmologists in decision-making, and contribute to better patient outcomes in diabetic care.

KEYWORDS: Diabetic Retinopathy (DR), Convolutional Neural Network (CNN), Multi-class Diagnosis, Feature Extraction, Automated Detection, Image processing & Machine Learning, Python web application, etc.

I. INTRODUCTION

Diabetic Retinopathy is a leading cause of blindness among adults with diabetes. Early detection is crucial for preventing vision loss, but manual examination of retinal images is labor-intensive, requires expert knowledge, and is prone to errors. With advancements in AI and machine learning, automated systems can analyze retinal images efficiently and provide accurate predictions, reducing the burden on healthcare professionals. This project aims to develop a Python-based web application that implements image processing and CNN-based machine learning models for multi-class classification of Diabetic Retinopathy.

The system involves several key processes: retinal image acquisition, pre-processing to enhance relevant features, and automated classification using a trained CNN model. Each retinal image is analyzed to detect abnormalities such as microaneurysms, hemorrhages, and exudates, which are critical for DR diagnosis. The CNN model learns complex patterns from the dataset, allowing the system to classify the severity of DR into multiple categories with high accuracy. This enables early intervention and timely treatment, which is essential for preventing disease progression.

By integrating AI with image processing techniques, this project provides a scalable and accessible solution for diabetic eye screening. The web application interface allows doctors and healthcare providers to upload retinal images, receive immediate diagnostic predictions, and track patient history over time. The combination of automation, accuracy, and user-friendly design makes this system a valuable tool for supporting healthcare services, especially in regions with limited access to specialist ophthalmologists.

Volume 15, Issue 4, April 2026**|DOI: 10.15680/IJRSET.2026.1504244|**

II. PROBLEM STATEMENT

Manual diagnosis of Diabetic Retinopathy is slow, expensive, and depends heavily on expert doctors. Due to the shortage of trained ophthalmologists, many patients remain undiagnosed until the disease becomes severe. There is a need for an automated and intelligent system that can analyze retinal images and detect the disease early, reducing the workload of doctors and improving patient outcomes.

III. BACKGROUND

Diabetic Retinopathy is one of the most common eye diseases caused due to diabetes, and it can lead to vision loss if not detected early. Many people are not aware of the disease in its early stages because symptoms are not clearly visible. Traditional diagnosis requires expert doctors to manually examine retinal images, which can be time-consuming and not easily available in all areas, especially in rural regions. This creates a need for an automated and faster diagnosis system.

With the advancement of Artificial Intelligence and Machine Learning, especially in image processing, it is now possible to analyze medical images more efficiently. Techniques like Convolutional Neural Networks (CNN) can learn patterns from retinal images and classify them into different stages of diabetic retinopathy. These models can handle large datasets and provide accurate results, reducing the workload on medical professionals and improving diagnosis speed.

In this project, a Python-based web application is developed to automatically detect and classify diabetic retinopathy using retinal images. The system is trained using a dataset of eye images and uses advanced CNN algorithms to perform multi-class classification. This approach helps in early detection, better treatment planning, and making healthcare services more accessible and efficient.

IV. SYSTEM OVERVIEW

The system consists of several key components: the User Interface, where retinal images are uploaded; the Image Processing Module, which preprocesses and enhances the images; the CNN-based Machine Learning Module, which performs multi-class classification; and the Results Module, which displays predictions and confidence levels to users. The backend is implemented in Python, using libraries like OpenCV for image processing and TensorFlow/Keras for CNN training and inference.

The workflow begins when a user uploads a retinal image through the web interface. The image is preprocessed to remove noise and enhance features. The processed image is then passed through the CNN model, which predicts the DR severity level. The prediction is displayed along with relevant visualizations to help doctors understand the analysis. The system is designed to handle large-scale image inputs, support multi-class classification, and provide fast and accurate diagnosis, making it suitable for real-world clinical applications.

The architecture ensures modularity, scalability, and reliability. Each module can be updated or improved independently, such as retraining the CNN model with new datasets or adding advanced image enhancement techniques. This design allows the system to evolve over time and adapt to new challenges in DR diagnosis and automated healthcare solutions.

V. PROPOSED SYSTEM

The proposed system is a Python-based web application designed to automate the detection and multi-class diagnosis of Diabetic Retinopathy. The system works in several stages: first, it collects retinal images from datasets or user uploads. Then, image processing techniques are applied to enhance important features such as blood vessels, microaneurysms, and exudates, which are crucial indicators of DR.

After preprocessing, the enhanced images are fed into a Convolutional Neural Network (CNN) model. The CNN is trained using a large dataset of retinal images with labeled DR severity levels. It learns to recognize complex patterns in the images corresponding to different stages of DR. Once trained, the model can predict the severity of new retinal images accurately and quickly, providing multi-class classification results.

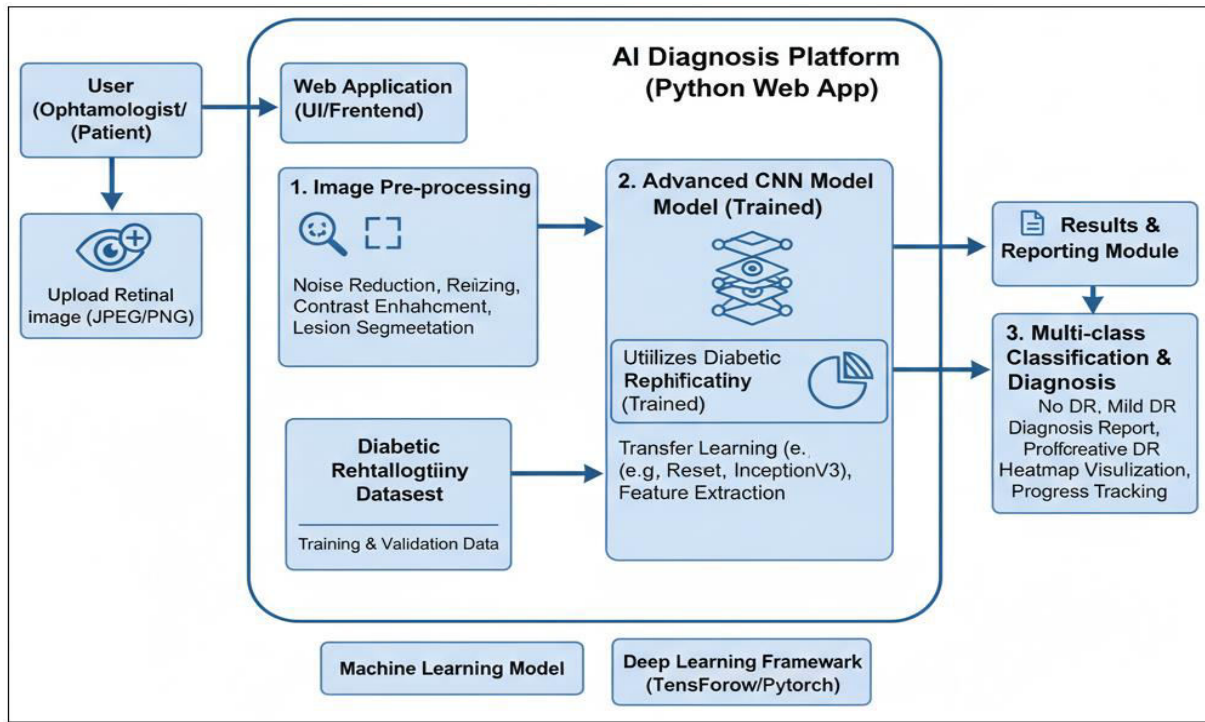


Fig.1: System Architecture Design

Finally, the system presents the results in a user-friendly web interface, allowing doctors or healthcare staff to view the predicted severity, confidence level, and visualized features of the retinal image. The automated approach ensures that each image is analyzed consistently, reduces manual workload, and provides reliable predictions for timely medical intervention.

Key Features of Proposed System

- **Smart Card & QR Code-Based Access**
Each patient gets a smart card with a QR code and unique ID, which helps in quick and secure identification and easy access to medical records.
- **Two-Step Authentication for Security**
The system uses an extra verification step (like OTP or password) to ensure that only authorized users can access sensitive patient data.
- **Centralized Data Storage**
All patient records are stored in a single centralized database, making it easy for hospitals, doctors, and other modules to access updated information anytime.
- **Multi-Module Integration**
The system connects different modules like Patient, Doctor, Hospital, Pharmacy, Insurance, and Admin, allowing smooth data sharing and better coordination.
- **Fast and User-Friendly System**
The application provides quick response time, easy navigation, and efficient handling of healthcare data, reducing manual work and improving service quality.

VI. RESULT AND DISCUSSION

The developed system for automatic diagnosis of Diabetic Retinopathy shows effective performance in detecting and classifying different stages of the disease from retinal images. The model was trained using a labeled dataset and tested on unseen images to evaluate its performance. The results show that deep learning models like CNN, ResNet, and VGG provide good accuracy in multi-class classification of retinal diseases.

The Convolutional Neural Network (CNN) model performs well in identifying important features from images such as lesions and abnormalities in the retina. Advanced models like ResNet and VGG improve the accuracy further by using deeper architectures and better feature extraction techniques. These models help in reducing misclassification and provide more reliable results.

Table 1: Accuracy Comparison Table

Algorithm	Accuracy (%)	Precision	Recall	F1-Score
CNN Model	91%	0.90	0.89	0.89
ResNet Model	94%	0.93	0.92	0.92
VGG Model	93%	0.92	0.91	0.91

From the experimental results, it is observed that the system can successfully classify images into different categories such as normal, mild, moderate, and severe stages of diabetic retinopathy. This helps in early diagnosis and supports doctors in decision-making. The system is fast, accurate, and can be used as a supportive tool in medical applications.

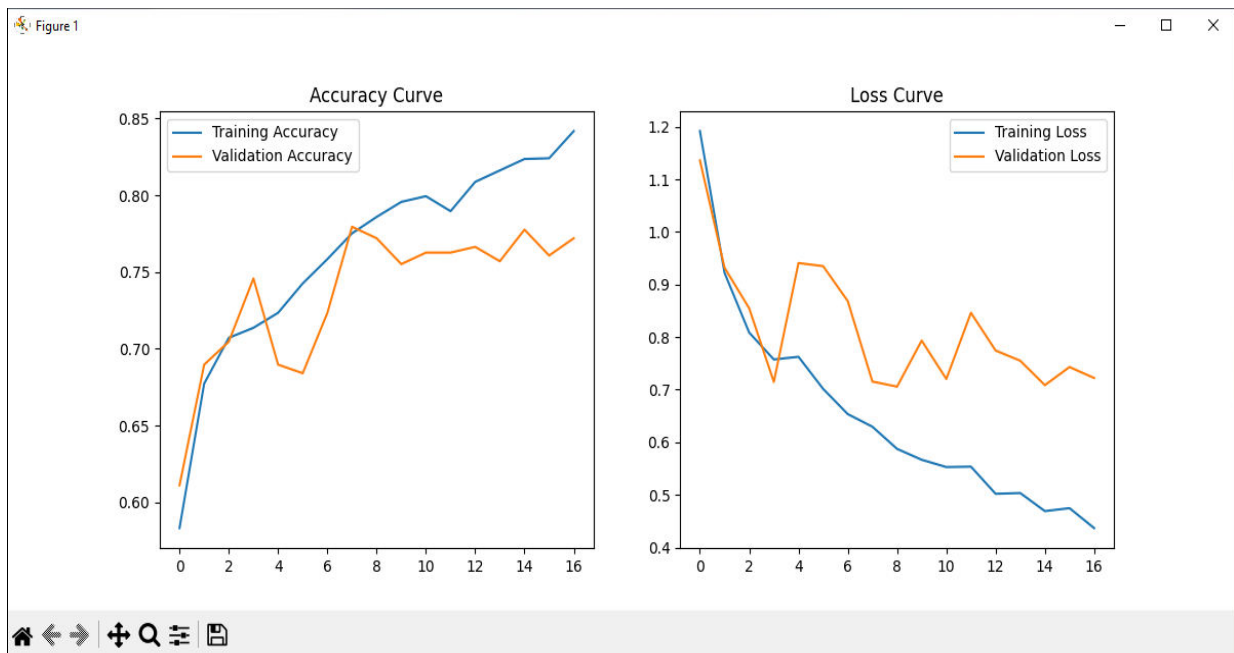


Fig.2: Result Analysis

VII. CONCLUSION

The successfully demonstrates the potential of artificial intelligence in the field of medical image analysis. By leveraging advanced image processing methods and Convolutional Neural Network (CNN) architectures, the system effectively identifies and classifies various stages of Diabetic Retinopathy from retinal images. The Python-based implementation provides a robust framework for automating the diagnostic process, reducing the dependency on manual screening, and enabling early detection of retinal damage. Through efficient preprocessing, feature extraction, and model training, the system achieves high accuracy in multi-class classification, making it a valuable tool for clinical decision support.

The integration of the trained CNN model into a web-based application makes the system user-friendly and easily accessible for doctors, researchers, and healthcare professionals. This interface allows users to upload retinal images and receive instant diagnostic results, improving the efficiency and speed of the screening process. The system also demonstrates how machine learning techniques can be integrated into real-world healthcare applications to enhance

diagnostic precision and reduce human error. With continuous improvements in model training, dataset quality, and computational power, this approach has the potential to revolutionize the detection and management of Diabetic Retinopathy on a global scale.

VIII. ACKNOWLEDGEMENT

I would like to sincerely thank the researchers and publishers for making their valuable resources available. I am also grateful to my guide for their constant support and guidance, and to the reviewers for their insightful suggestions. Finally, I thank the college authorities for providing the necessary infrastructure and support throughout the course of this project.

REFERENCES

1. J. Zaylaa, G. I. Wehbe and A. M. Ouahabi, "Bringing AI to Automatic Diagnosis of Diabetic Retinopathy from Optical Coherence Tomography Angiography," 2021 Sixth International Conference on Advances in Biomedical Engineering (ICABME), Werdanyeh, Lebanon, 2021, pp. 49-53, doi: 10.1109/ICABME53305.2021.9604812.
2. M. M. Abdelsalam and M. A. Zahran, "A Novel Approach of Diabetic Retinopathy Early Detection Based on Multifractional Geometry Analysis for OCTA Macular Images Using Support Vector Machine," in IEEE Access, vol. 9, pp. 22844-22858, 2021, doi: 10.1109/ACCESS.2021.3054743.
3. U. Sakthi, T. C. Raj and A. S. D. S. Rao, "Prediction and Classification of Diabetic Retinopathy by Optical Coherence Tomography Images," 2025 6th International Conference on Data Intelligence and Cognitive Informatics (ICDICI), Tirunelveli, India, 2025, pp. 840-845, doi: 10.1109/ICDICI66477.2025.11135394.
4. A. K. Mondol, D. Das, T. Yasmin, S. S. Arjon, S. M. H. S. Iqbal and N. Aman, "Support Vector Machine Model for Enhancing the Accuracy of Chronic Kidney Disease Risk Prediction," 2025 International Conference on Quantum Photonics, Artificial Intelligence, and Networking (QPAIN), Rangpur, Bangladesh, 2025, pp. 1-6, doi: 10.1109/QPAIN66474.2025.11172008.
5. Y. Zamanidoost, T. Ould-Bachir and S. Martel, "OMS-CNN: Optimized Multi-Scale CNN for Lung Nodule Detection Based on Faster R-CNN," in IEEE Journal of Biomedical and Health Informatics, vol. 29, no. 3, pp. 2148-2160, March 2025, doi: 10.1109/JBHI.2024.3507360.
6. G. Ali, A. Dastgir, M. W. Iqbal, M. Anwar, and M. Faheem, "A Hybrid Convolutional Neural Network Model for Automatic Diabetic Retinopathy Classification from Fundus Images," ResearchGate, 2023. Available: https://www.researchgate.net/publication/371239997_A_Hybrid_Convolutional_Neural_Network_Model_for_Automatic_Diabetic_Retinopathy_Classification_from_Fundus_Images.
7. A. Papadopoulos, F. Topouzis, and A. Delopoulos, "An Interpretable Multiple-Instance Approach for the Detection of Referable Diabetic Retinopathy from Fundus Images," arXiv, vol. 2103.01702, 2021. Available: <https://arxiv.org/abs/2103.01702>
8. A. Antal and A. Hajdu, "An Ensemble-Based System for Automatic Screening of Diabetic Retinopathy," arXiv, vol. 1410.8576, 2014. Available: <https://arxiv.org/abs/1410.8576>
9. O. Saha, R. Sathish, and D. Sheet, "Fully Convolutional Neural Network for Semantic Segmentation of Anatomical Structure and Pathologies in Colour Fundus Images Associated with Diabetic Retinopathy," arXiv, vol. 1902.03122, 2019. Available: <https://arxiv.org/abs/1902.03122>
10. A. Smailagic, A. Sharan, P. Costa, A. Galdran, A. Gaudio, and A. Campilho, "Learned Pre-Processing for Automatic Diabetic Retinopathy Detection on Eye Fundus Images," arXiv, vol. 2007.13838, 2020. Available: <https://arxiv.org/abs/2007.13838>
11. N. Ul Haq, T. Waheed, K. Ishaq, M. A. Hassan, N. Safie and N. F. Elias, "Computationally Efficient Deep Learning Models for Diabetic Retinopathy Detection: A Systematic Review," Artificial Intelligence Review, vol. 57, 2024.
12. Z. Hu, J. Ji, J.-W. Lin and L.-P. Cen, "Convolutional Neural Network Algorithms in Diabetic Retinopathy: How Far Does It Go?," Artificial Intelligence Review, vol. 59, 2025.
13. U. Ishtiaq, E. R. M. F. Abdullah and Z. Ishtiaque, "A Hybrid Technique for Diabetic Retinopathy Detection Based on Ensemble-Optimized CNN and Texture Features," Diagnostics, vol. 13, no. 10, 2023.
14. M. Anand, "CNN Architecture for Fundus Image Denoising, Feature Extraction and Classification in Diabetic Retinopathy," International Journal of Intelligent Systems and Applications in Engineering, vol. 12, no. 3, 2024.
15. M. Swathi and S. V. Lakshmi, "Classification of Diabetic Retinopathy Grades Using CNN Feature Extraction," International Journal of Computational and Experimental Science and Engineering, vol. 10, no. 4, 2024.

16. D. R. Kasat, "Improved CNN Model for Diabetic Retinopathy Analysis and Classification," International Journal of Intelligent Systems and Applications in Engineering, vol. 12, 2024.
17. S. Subramanian and L. H. Gilpin, "Convolutional Neural Network Model for Diabetic Retinopathy Feature Extraction and Classification," arXiv preprint arXiv:2310.10806, 2023.
18. I. Al-Kamachy, R. Hassanpour and R. Choupani, "Classification of Diabetic Retinopathy Using Pre-Trained Deep Learning Models," arXiv preprint arXiv:2403.19905, 2024.
19. A. Uppina, S. N. Krishnan, T. K. S. Teja, N. N. Iyer and J. D. P. R., "Enhancing Diabetic Retinopathy Detection with CNN-Based Models: A Comparative Study of UNET Architectures," arXiv preprint, 2024.
20. S. Mardianta, A. Affandy and C. Supriyanto, "Diabetic Retinopathy Detection Based on CNN with SMOTE and CLAHE Techniques," arXiv preprint, 2025



INTERNATIONAL
STANDARD
SERIAL
NUMBER
INDIA



INTERNATIONAL JOURNAL OF INNOVATIVE RESEARCH

IN SCIENCE | ENGINEERING | TECHNOLOGY

 9940 572 462  6381 907 438  ijirset@gmail.com



www.ijirset.com

Scan to save the contact details